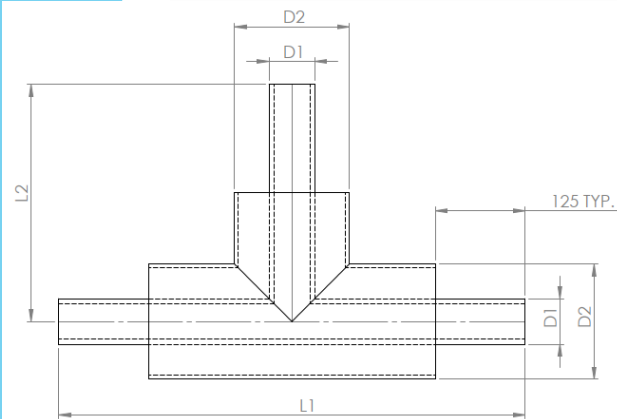
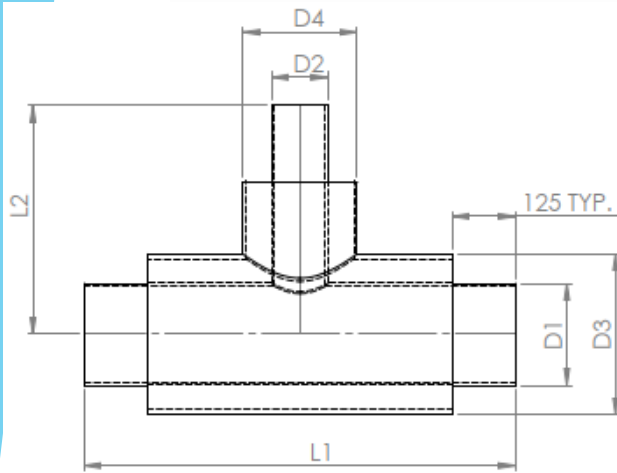


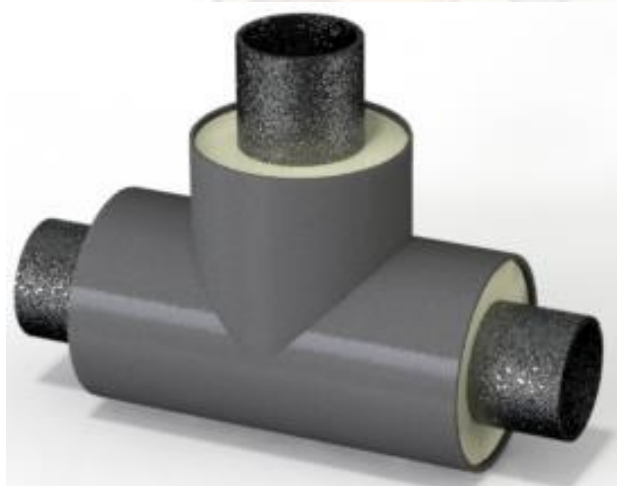
ih²O INSULATED PIPE



EQUAL TEE



REDUCING TEE



CS-HDPE PRE-INSULATED STRAIGHT TEES			
D1	D2	L1	L2
60.3	160	570	290
73	160	570	290
88.9	200	610	310
114.3	225	635	320
141.3	250	660	335
168.3	280	690	350
219.1	355	765	390
273.1	400	810	410
323.9	450	860	435
355.6	500	910	460
406.4	560	970	490
457	630	1040	525
508	630	1040	525

CS-HDPE PRE-INSULATED REDUCING TEES					
D1	D2	D3	D4	L1	L2
73	60.3	160	160	570	290
88.9	60.3	200	160	570	310
88.9	73	200	160	570	310
114.3	60.3	225	160	570	320
114.3	73	225	160	570	320
114.3	88.9	225	200	610	320
141.3	60.3	250	160	570	335
141.3	73	250	160	570	335
141.3	88.9	250	200	610	335
141.3	114.3	250	225	635	335
168.3	73	280	160	570	350
168.3	88.9	280	200	610	350
168.3	114.3	280	225	635	350
168.3	141.3	280	250	660	350
219.1	88.9	355	200	610	390
219.1	114.3	355	225	635	390
219.1	141.3	355	250	660	390
219.1	168.3	355	280	690	390
273.1	114.3	400	225	635	410
273.1	141.3	400	250	660	410
273.1	168.3	400	280	690	410
273.1	219.3	400	355	765	410
323.9	114.3	450	225	635	435
323.9	168.3	450	280	690	435
323.9	219.1	450	355	765	435

CS-HDPE PRE-INSULATED REDUCING TEES					
D1	D2	D3	D4	L1	L2
323.9	273.1	450	400	810	435
355.6	168.3	500	280	690	460
355.6	219.1	500	355	765	460
355.6	273.1	500	400	810	460
355.6	323.3	500	450	860	460
406.4	168.3	560	280	690	490
406.4	219.1	560	355	765	490
406.4	273.1	560	400	810	490
406.4	323.9	560	450	860	490
406.4	355.6	560	500	910	490
457	219.1	630	355	765	525
457	273.1	630	400	810	525
457	323.9	630	450	860	525
457	355.6	630	500	910	525
457	406.4	630	560	970	525
508	219.1	630	355	765	525
508	273.1	630	400	810	525
508	323.9	630	450	860	525
508	355.6	630	500	910	525
508	406.4	630	560	970	525
508	457	630	630	1040	525