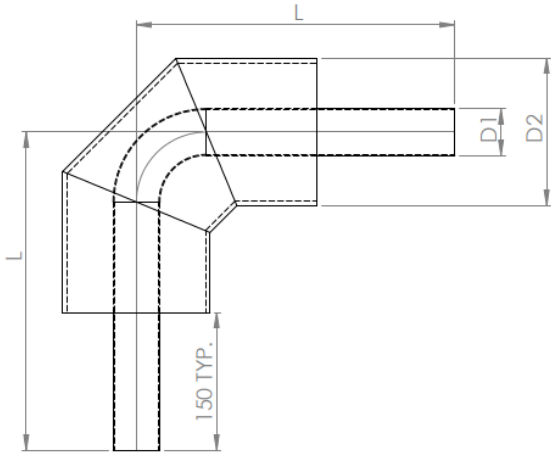
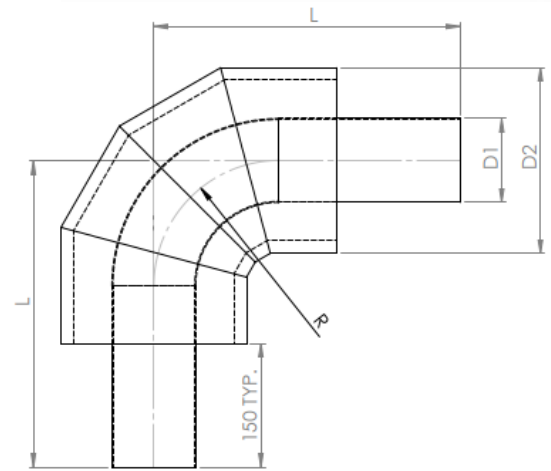


# ih<sup>2</sup>O INSULATED PIPE



FOR SERVICE PIPE  
D1 ≤ 76.2mm (3 pieces)

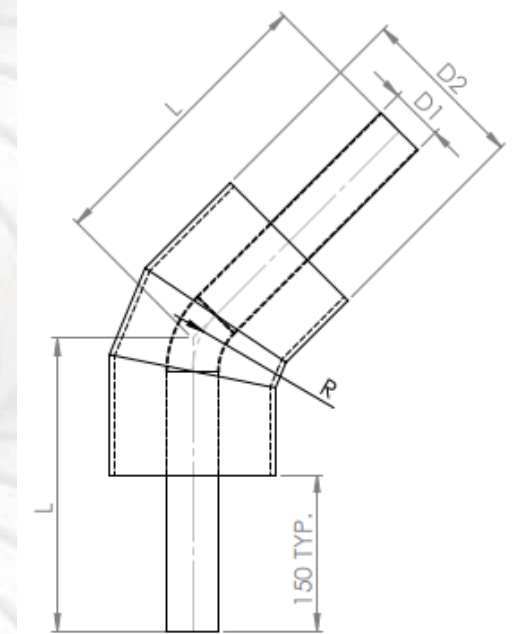


FOR SERVICE PIPE  
D1 > 76.2mm (4 pieces)



CU-HDPE PRE-INSULATED LONG RADIUS 90° BEND			
D1	D2	L	R
50.8	160	280	76
63.5	200	290	95
76.2	200	300	114
101.6	225	320	152
127	250	330	191
152.4	280	350	229
203.2	355	400	305
228.6	355	410	343
254	400	430	381

CU-HDPE PRE-INSULATED LONG RADIUS 45° BEND			
D1	D2	L	R
50.8	160	340	76
63.5	200	370	95
76.2	200	390	114
101.6	225	370	152
127	250	410	191
152.4	280	440	229
203.2	355	500	305
228.6	355	540	343
254	400	570	381



FOR ALL SERVICE PIPE  
(3 PIECES)