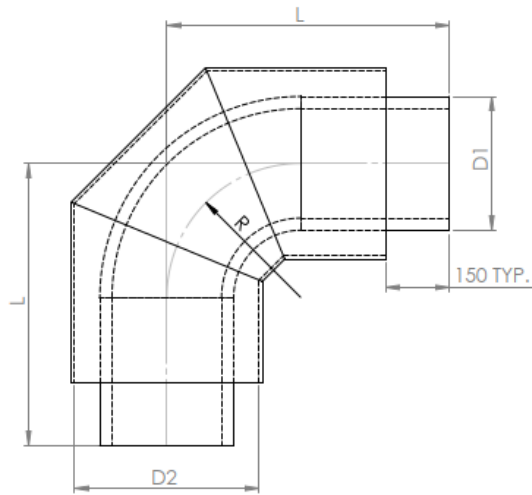
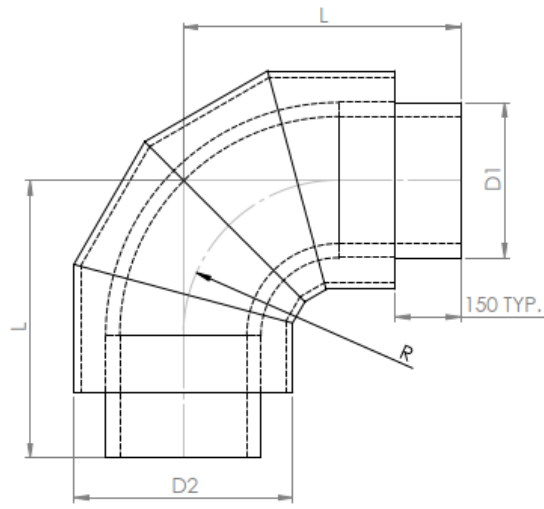


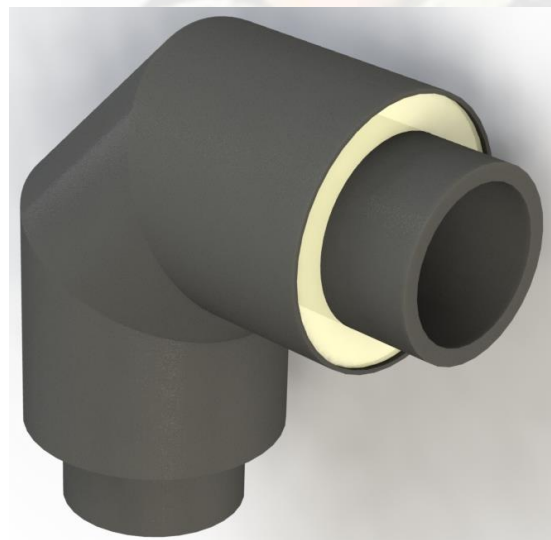
# ih<sup>2</sup>O INSULATED PIPE



FOR SERVICE PIPE  $D1 \leq 315\text{mm}$  (3 pieces)

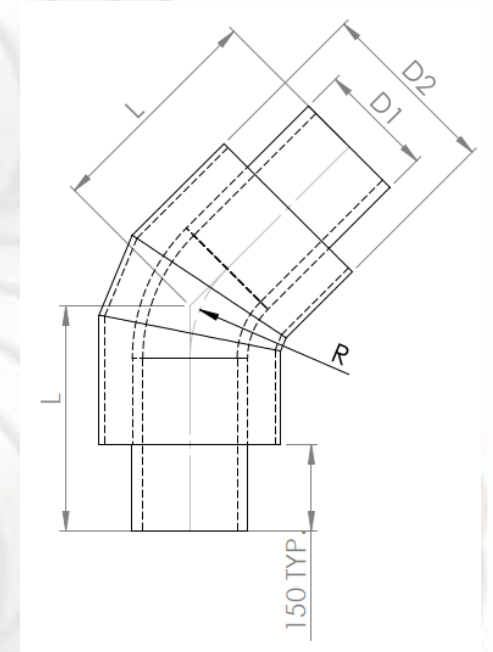


FOR SERVICE PIPE  $D1 > 315\text{mm}$  (4 pieces)



PE100 PRE-INSULATED SHORT RADIUS BEND 90°			
D1	D2	L	R
32	160	380	32
40	160	380	40
50	160	400	50
63	180	410	63
75	200	410	75
90	200	420	90
110	225	420	110
125	250	440	125
140	250	440	140
160	280	450	160
180	315	470	180
200	315	480	200
225	355	510	225
250	400	530	250
280	400	550	280
315	450	580	315
355	500	640	355
400	560	670	400
450	630	720	450
500	630	750	500
560	710	800	560

PE100 PRE-INSULATED SHORT RADIUS BEND 45°			
D1	D2	L	R
32	160	330	32
40	160	335	40
50	160	340	50
63	180	340	63
75	200	345	75
90	200	345	90
110	225	350	110
125	250	350	125
140	250	355	140
160	280	360	160
180	315	370	180
200	315	370	200
225	355	380	225
250	400	390	250
280	400	400	280
315	450	410	315
355	500	430	355
400	560	440	400
450	630	460	450
500	630	470	500
560	710	490	560



FOR ALL SERVICE PIPE  $D1$  (3 PIECES)

NOTE: BENDS AVAILABLE IN SDR11 (PN16), SDR 13.6 (PN12.5), AND SDR 17 (PN10)